



CHAPTER FL1-K, MATANZAS RIDERS PALM COAST/ST. AUGUSTINE

OCTOBER



Our monthly gathering takes place on the 2nd Monday of every month at the IHop Restaurant, 212 Palm Coast Pkwy, Palm Coast, FL.

We begin with dinner at 6 pm, and our gathering starts at 7 pm.

Please come and join us – we'd LOVE to see you!

Visit us online at www.fl1-k.org!

Ed & Jeanette Carr, Chapter Directors

386-846-0146 - gwroadrider@gmail.com



From the Director's Chair

Ed & Jeanette Carr, FL1-K Chapter Directors



Wow. Here it is October already. Where has this year gone. With October comes the eight-month Dry Season (from October to May). During the dry season we average about 3 inches of rain a month. The driest month in Florida typically falls between November and April with February standing out as the driest period. April also tends to be quite dry as fronts become weaker, yielding less rain. All this means is that our rides should not be interrupted as much by rain for the next eight months.

On Saturday, the 28th of September we joined Chapters FL2-D Melbourne and Chapter FL1-G Sanford (The Dill Team Chapter) for a Multi-Chapter Lunch at Goodrich's Seafood Restaurant in Oak Hill FL. Our Chapter met at Ride location A, in Ormond Beach and rode to Osteen to meet up with Chapter FL1-G. From there we rode over Maytown Rd to Goodrich's restaurant where we met with Chapter FL2-D for lunch. It proved to be a sunshine and rainless ride. The day was outstanding, and seeing old friends that we haven't seen for a while was priceless.

Three more weeks to the Mississippi District's "Born To Be Wild" Rally in Biloxi. This is always a great rally to attend and it's close to the casinos. KD Cycles has donated 3 \$500.00 checks to be given away at the rally. So come on down to the St Martin Community Center, 11504 Lemoyne Blvd, Biloxi, MS and join in the FUN.

Don't forget to dress up Halloween style at our Chapter Social. Full A costume will get you a Florida Rally raffle ticket.

We hope to see you at an EWMA event in 2024,

Ed & Jeanette Carr, Directors

Chapter FL1-K, Palm Coast/St. Augustine
Florida District Assistant Safety/Ride Coordinator
gwroadrider@gmail.com , (386) 846-0146



If opportunity
doesn't knock,
build a door.

Milton Berle



From the Assistant Director

Bob & Julie Ahearn, FL1-K Asst. Chapter Directors

Welcome to October. This month we'll celebrate Columbus Day, "Biketoberfest" in Daytona, the Mississippi District Rally, and finally Halloween at the end of the month.

Last month we were unable to attend the North Carolina Rally, "Wings Over the Smokies", in Browns Summit.

The day prior to our planned departure, we had to visit the Mayo Hospital Emergency Room. Julie was feeling weak so based on blood tests the day prior, her doctor called and told us to get to the Hospital as soon as possible.

Julie's blood hemoglobin had dropped to 5.6 g/dl, from a normal range of 12.0 to 15.5 g/dl for women.

Hemoglobin is a protein in red blood cells that carries oxygen to tissues throughout the body. Low hemoglobin levels can lead to anemia and levels less than 6.5 g/dl can be life threatening.

Julie was admitted to Mayo for the next 24 hours during which time she was given two units of blood and infused with a bag of iron.

The next afternoon, I was able to rescue her from the Hospital. Now she will be subjected to many tests to locate the possible internal bleeding.

We went through all the medical tests last year, and the source of the bleeding was never found.

This month, if things go well with medical, our plans are to attend the Mississippi Rally, scheduled for October 24th through 26th in Biloxi. The Rally will be held at the St Martin Community Center.

We have reservations at the "Biloxi Bay RV Resort" located only a mile from the Rally.

Last year we stayed there and enjoyed the Halloween events they had for the kids, and the adults. We better have lots of candy ready!



Next month, our plans include a family vacation with my brother, his wife, and her mom.

The family has the "Willa Branch Cabin" reserved at Boyd's Mountain in Waynesville, North Carolina, just outside Maggie Valley.

The cabins are nestled in a 175-acre cove overlooking the Smoky Mountains and includes a Fraser Fir Christmas Tree Farm.

It'll be a nice place to relax and enjoy the time with family.

(Continued on page 4)

(Continued from page 3)

During our time there, we plan to take a train ride through the smokies on the Great Smokies Mountain Railroad.

The following week after we return home, Julie and I will take the RV and Trike for a campout at the “North Beach Camp Resort”, off Coastal Highway in St. Augustine.

The campground is located across the street from Vilano Beach, the Reef Restaurant, and close to Aunt Kate’s Restaurant.

It’s hard to believe Thanksgiving will be a little more than a week after we return from the campground!

Hope to see everyone soon!

Robert & Julie A’Hearn
FL1-K Assistant Chapter Directors



On The Lighter Side

One day I was walking when I saw a man on a motorcycle.

Suddenly a donkey came up kicked the man off the motorcycle, got on the motorcycle and then drove it away. And I thought to myself, “That’s badass“.

An engineering student is walking on campus one day when another engineer rides up on a shiny new motorcycle.

“Where did you get such a rocking bike?” asked the first.

The second engineer replied “Well, I was walking along yesterday minding my own business when a beautiful woman rode up on this bike. She threw the bike to the ground, took off all her clothes and said, ‘Take what you want.’”

The first engineer nodded approvingly “Good choice, the clothes probably wouldn’t have fit!”

-
- What is white, black and dead all over? A zombie trick or treating in a tuxedo.
 - When do zombies finish trick or treating? When they are dead tired.
 - Why shouldn't an angry witch take her broom trick or treating? She might fly off the handle.
 - How do ghosts do their makeup before they go out trick or treating? They use vanishing cream.
 - What do vampires take to get around on Halloween night? A blood vessel.
 - Why did the skeleton run away? Because a dog was after his bones.
 - How did the skeleton know it was going to rain on Halloween? He felt it in his bones.

(Continued on page 5)

(Continued from page 4)

- What is a vampire's favorite halloween candy? A sucker.
- How does a witch know the best time to go trick or treating? She checks her witch watch.
- What is a monster's favorite halloween candy? Bugs and (Hershey's) kisses.
- Why didn't anyone want to go trick or treating with Dracula? Because he is a pain in the neck.
- Why don't skeletons like Halloween candy? They don't have the stomach for it.
- What kind of car does Frankenstein drive on Halloween night? A monster truck.
- What do birds give to trick-or-treaters? Tweets.
- Where do ghosts like to trick or treat? At dead ends.
- Who gives Dracula the most candy on Halloween? His fang-club.
- Where do werewolves store all of their Halloween candy? In a warehouse.
- What do birds say on Halloween? "Trick or tweet!"
- Why don't skeletons ever go trick or treating? Because they have no-body to go with.
- What do ghosts give out to trick or treaters? Booberries!
- Who did Frankenstein go trick or treating with? His ghoulish friend.
- What do witches put on to go trick or treating? Mas-scare-a.
- What does Bigfoot say when he asks for candy? "Trick-or-feet!"
- Which type of pants do ghosts wear to trick or treat? Boo jeans.
- What makes trick or treating with twin witches so challenging? You never know which witch is which!
- What happens when a vampire tries to trick or treat in the snow? Frost bite!
- What do you call two witches trick or treating together? Broommates



American Flags



If you have any torn, tattered, or discolored flags of any size, please give them to me. I will gladly have them disposed of properly, DO NOT put into trash.

Thank you.

Marcia D. Shad

marcia7780@gmail.com/386

386-679-1945



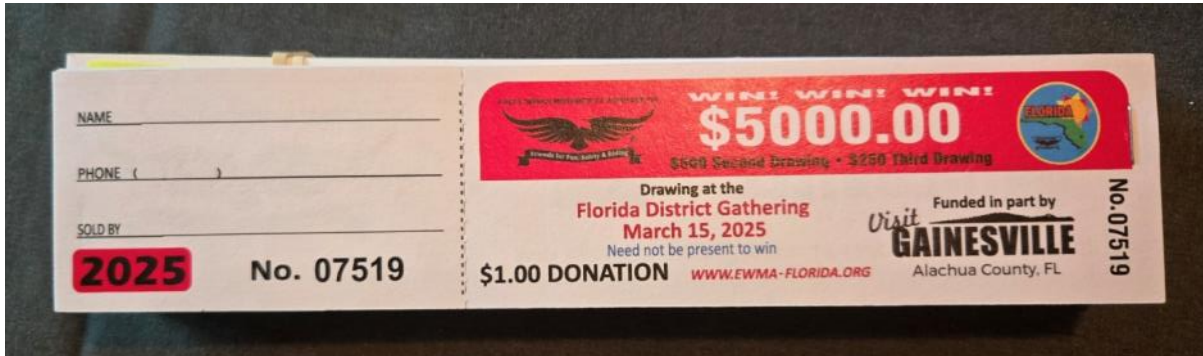


Membership Development Musings

Jeanette Carr, Membership Development Coordinator



2025 Rider Ed Ticket Sales



Our chapter has 1000 tickets (100 books) to buy, give away, or try to sell before the 2025 Florida District Rally in March. Last year we sold 1500 tickets and received 10% for our chapter treasury and our 2024 Charter Fee (\$100) was paid for by Rider Ed. Each member has been asked to purchase at least 1 book, but the more books purchased/sold means more chances!

1st Aid/CPR and Rider Classes cost \$30 each, so even taking just one class, you are ahead by \$20 per book & still get 3 chance to win plus a 4th chance if you sell a winning ticket!

The holidays are coming soon, remember that the tickets make great birthday or Christmas stocking stuffer idea.

1 Book Purchased	2 or More Books Purchased
Coulson	McNicol
H. Stewart	Shad
Van de Vord	Carr
	Chapter K

The chapter pays for some tickets which are used as game prizes.

Ed and I are on the District Staff and thus not eligible to win one of the 3 top prizes but we still purchase many tickets to give away as door prizes or gifts to family and friends. We are eligible to sign the bottom of any ticket we purchase/sell and have a chance to win the “Sold By” prize.

4 MONTHS LEFT FOR YOU TO PURCHASE/SELL TICKETS. See Jeanette

Jeanette Carr,
386-846-1678
gwcorider366@gmail.com



FROM THE MEMBERSHIP

S.S. BANGER FERRY & Motorcycles

Ed and I have traveled by ferry on many of our trips across America. Some were big and carried large trucks & RV's while some were various sizes down to one in Kentucky that carried 1 car or 4 motorcycles and was pulled across by rope.

After our visit with Gary & Ruth in August, we traveled on the S S Badger Ferry across Lake Michigan to the E.W.M.A. Rendezvous in Green Bay Wisconsin. WHAT A TRIP !.

Waiting in line to board, there were 2 motorcycles ahead of us but then we looked to the left and there were 30 + bikes/trailers waiting to load. Among the group we spotted Curtis Palmore & FL1-M members.

Only employees were allowed to drive (backwards) the vehicles aboard the ferry. It was amazing how quickly the process went, even backing RV/s and horse truck/trailers! Motorcycles, now that was different. The riders were allowed to board their bikes & were the last to load and park in stalls.

Multiple locations were available for people to enjoy the 3 hour trip inside and on deck. There was a snack bar, gift shop, movie theater, museum, and state rooms. Popcorn was available for purchase and ½ way through the trip, it was free to veterans/military members.

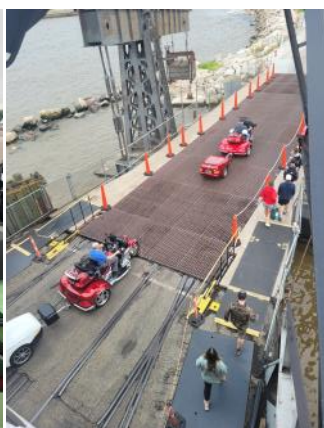
Before our trip, Nan & Bob Shrader traveled by this ferry and enjoyed the sun on the deck – “just like a cruise ship”, Nan posted on Facebook. Well, Ed & I made our way up the steps but trying to walk forward was too difficult due to the strong wind. There was no rain, but the overcast sky & breeze were not friendly. So, what did we do.....Bingo!

I was lucky to win 2 of the 30 games and receive keepsakes. We met some new people and also talked with old friends Tom Peck & his group from Tennessee and the M&M members.

A statue of a Badger welcomed us to Wisconsin and the motorcycles were the 1st to disembark. I got a photo of Tom Peck riding off. It wasn't long before we spotted our truck heading off and soon we continued our travels.

The S.S.Badger Ferry has crossed Michigan Lake for 73 seasons. It first carried train cars but now carries vehicles, bike rides, and walk-on passengers. The familiar departure/arrival horn can be heard a distance of 5 miles over land.

J. Carr





Florida District Safety/Ride Coordinators

Safety Article

Dominick & Diane Desiato



KNOW YOUR MACHINE

I encounter many riders in my travels which have many opinions and questions about riding a motorcycle. Most riders feel like if you can ride a two-wheel motorcycle you can ride any vehicle classified as a motorcycle. Technology has greatly outgrown rider ability and knowledge. Because vehicles classified as motorcycles are so diverse you must be sure that you have the proper knowledge of the vehicle you are riding as to its features and capabilities.

Dirty Harry rightfully stated it: “You got to know your limitations.” This has always been true for the rider. But, now more than ever it is also true of your machine. In the past the common limitations of a motorcycle were pretty simple: Ground clearance and the braking system were about all you had to know about your machine for safe operation. Today’s modern machines are offering much more technologically advanced systems such as: Selective Riding Modes (Road, Trip, Sport, & Rain), Traction Control, Active Cruise Control, Lane Warning Assist, and Side View Assist, just to name a few. If your new machine comes with any of the new technology you have to understand how it works. These systems were developed to try to help the rider stay out of trouble. The only defect these modern systems can’t fix is: “the loose nut behind the wheel” (the rider). If you don’t know how these systems work you tend to not let them work. The systems were placed there to help you ride safely... let them.

Another situation I have encountered is when the two-wheel riders, that have “aged out”, have decided to transition to a three-wheeled motorcycle so they can continue to ride. Legally taking a transition course is not required. In Florida if you are endorsed to ride a two-wheeled motorcycle you can ride a three-wheeled motorcycle. Three-wheeled motorcycles would include: The Traditional Trike-two wheels in the rear, The Reverse Trike-two wheels in the front, and A Sidecar Rig-off to the right side. Each of these vehicles has its own distinctive handling characteristics. Having ridden a two-wheeled motorcycle for many years does not give you the knowledge and experience you need to have to safely operate a three-wheeled motorcycle. There are classes you can take specifically for three-wheeled motorcycles to familiarize you with what you need to know about the safe operation of these vehicles. I strongly recommend you take one of these classes if you are going to make the move to three wheels.

Let me tell you a story which illustrates what I am talking about. There was a two-wheeled rider who had only ridden two-wheels for decades. He physically needed to transition to three-wheels. He bought a Can-am. The Can-am has traction control linked with the throttle. This means if you enter a curve too fast and the machine senses that you are about to raise an inside wheel. The machine will let off on the throttle and brake the vehicle regardless of what the rider is doing. This rider was a trained two-wheel rider. That meant he was trained that is you enter a curve too fast on two-wheels you first straighten the motorcycle so you can safely apply the brakes to slow down. So on this unfortunate day the rider entered a curve too fast on his Can-am. He realized he was going too fast. He instinctively straightened the Can-am so he could apply the brakes, not allowing the Can-am to take care of the situation. His hand was apparently still on the throttle in the on posi-

(Continued on page 9)

(Continued from page 8)

tion. So what did the Cam-am think at this point? The wheels were now straight so there was no longer a threat of wheel lift. The Can-am reapplied the throttle. The machine went straight off the road into a barbed wire fence. The fence did stop the machine. Not the kind of stop I would prefer. The rider did sustain injuries from the barbed wire.

So the conclusion to my article is to: "know your machine". Especially if you have purchased one to the newer models with better safety features.

*Ride safe & wave,
Dominick & Diane*

FREE STUFF

Contact Don Black
Call or text: 386-481-7996

BOX 1

- GL 1800 Seat Covers (2)
- Helmet Covers (4)
- Rain Suit (S)
- Cold Weather Pants (M)

Box 2

- Gloves Mens/Ladies
- Bandana's
- Rain Boot Covers (2 Sets)
- Back Pack Bags
- Dickies (2)
- Ankle Holster (380)
- Sleeves (2 Sets)
- Rain Suit (New) Not Motorcycle (L)

Bob 3

- Tub Snow pants Mens (L)
- Snow pants Ladies (L)
- Froggtoggs Rain suit (Gold) (L)
- Seat Cushion MIA/POW
- Duffie bags for Saddle Bags "Wing Stuff"
- Travel Cups with Custom Mount (2)
- Full Bike Cover "California Car Cover Co."

Perky Paula's Embroidery

Paula Maxwell, Owner
1327 North St.
Daytona Beach, Fl. 32114
386-252-3539 Home
386-679-3001 Cell

PJMax2002@yahoo.com
www.Etsy/shop/perkypaulas

TNT Designs & Custom Gifts

Dreamers Fashions Vest Custom Pins/Patches
Shirts (Short Sleeve, Long Sleeve, Polos, Hoodies etc.)
Hats/Visors Embroidered Items
Riding Jackets S. W. A. T. Riding Boots
Contact—George Murphy @ 304-669-5190 or
geminrough@aol.com
Brenda Murphy @ 609-669-7572 or
Murphybrenda234@gmail.com

FL1-K October Calendar

Oct 01

'Footloose Ride', Meet at McDonald's, 5190 E Moody Blvd, Palm Coast, 32164 KSU @ 9:00 AM.

Team Meeting - eat at 6pm and meet at 7pm, at Houligan's @ Destination Daytona 1643 US1, Ormond Beach, 32174

Oct 06

Chapter FL1-G Social Gathering, IHOP Breakfast Restaurant, 111 S Oregon Ave, Sanford, FL 32771, Meet there at 12:30PM6 Oct2024 -.

Oct 08

Freedom Ride - Because We Can, Meet at McDonalds,105 Interchange Blvd, Ormond Beach, 32174. KSU 9AM

Oct 14

Chapter FL1-K Social Gathering We will eat at 5:30 and begin the Social Gathering at 7:00pm at the IHOP, 212 Palm Coast Pkwy, Palm Coast FL 32137.

Oct 15

'Footloose Ride', Meet at McDonald's, 5190 E Moody Blvd, Palm Coast, 32164 KSU @ 9:00 AM.

Oct 16

Visit Chapter FL1-H, Daytona Beach, Meet 6 pm at Houligan's, 1725 W International Speedway Blvd. Daytona Beach, 32114

Oct 22

Freedom Ride - Because We Can, Meet at McDonalds,105 Interchange Blvd, Ormond Beach, 32174. KSU 9AM

Ladies Luncheon 11:30@ Outback Steak House, 45 Plaza Dr, Palm Coast, FL 32137. Meet there at 11:30AM

Oct 24

Lotto Dinner, DB Pickles, 400 S Nova Rd, Ormond Beach, FL 32174. Meet there at 5:30PM

Oct 29

Freedom Ride - Because We Can, Meet at McDonalds,105 Interchange Blvd, Ormond Beach, 32174. KSU 9AM

Oct 31

Halloween



Ride Safe



BIRTHDAYS and ANNIVERSARIES, etc.!



HAPPY ANNIVERSARY	
Gordon & Betty Currie	10/11
Howard & Denise Stewart	10/17
Jim & Betty Rhodes	10/29

WINNING DOOR PRIZE CONTRIBUTOR	
50/50	
Attendance	



DOOR PRIZES

HAPPY BIRTHDAY	
Howard Towne	10/05
Sharon Van de Ford	10/05
Phil Nagley	10/07
Carol True	10/16
Jeanette Carr	10/26
James King	10/31

CONTRIBUTED DOOR PRIZES	

FL1-K Happenings



Lotto Dinner



Ladies Luncheon





Florida District Calendar of Events



DATE(S)	EVENT	LOCATION	Link
Sep 20-21, 2024	North Carolina District Rally "Wings Over the Smokies"	Location TBD	Flyer
Oct 24 - 26, 2024	Mississippi District Rally "Born To Be Wild"	Biloxi, MS	Flyer
Mar 13-15, 2025	Florida District Gathering of Friends for Fun "Born to be Wild"	Gainesville, FL	Flyer
Apr 24 - 26, 2025	Tennessee District Rally "America the Beautiful"	Johnson City, TN	Flyer
May 15 - 17, 2025	South Carolina District Rally "Salute to the Troops"	Newberry, SC	Flyer
Jun 5-7, 2025	Georgia District Rally "Beach Bash"	Hele, GA	Flyer
Jun 26-28, 2025	Alabama District Rally "Roaring 20s"	Sheffield, AL	Flyer
Aug 28-30, 2025	EWMA National Rally Eagle Wings Rendezvous"	Fort Smith, AR	Link To EWMA Website

Eagle Wings Motorcycle Association

Our Vision:

A simple, fun, riding, social association of like-minded motorcycle enthusiasts

Our Motto:

Friends for Fun, Safety & Riding

Our Mission:

To provide to our Membership a fun and social environment that focuses on the love of motorcycling.

To bring the world together around that passion while helping them to be safer and mindful when riding a motorcycle.

To be a family-oriented, non-religious, non-political association, respectful of each other's beliefs.

Enjoying the ride together with like-minded motorcyclists.

Our Core Values:

FAIRNESS: All issues should stand the test of "is it fair?"

COMMUNICATIONS: The more we share information and communicate about our common love of motorcycling, the more we will all learn and benefit.

WORK: Working together toward our common vision, motto and mission keeps us focused and gives us the ability to become exceptional.

QUALITY: To be the best we can, treating all the way we would want to be treated, holding each other in highest esteem and respect in all we do.

ATTITUDE: We are each responsible for our own attitude. Strive to be positive, constructive, respectful, enthusiastic and creative in all interactions with members or public to enhance the relationship and promote our motto.



FRIENDS FOR FUN, SAFETY AND RIDING!

EAGLE WINGS MOTORCYCLE ASSOCIATION



Member #: _____
For Office Use

Membership Application

DD/MM/YYYY

Member Name: _____ Member DOB: _____
Last, First

Member Name: _____ Member DOB: _____

Member Name: _____ Member DOB: _____

Member Name: _____ Member DOB: _____

Member Name: _____ Member DOB: _____

Primary Mailing Address: _____

City: _____ ST/PV: _____ Zip/Postal Code: _____
 USA Canada Other

Member Phone number: _____ Member Email: _____

Select One:

Individual Membership: 3 years \$65.00, 2 years \$45.00, 1 year \$25.00

Family Membership (2 or more people in household): 3 years \$80.00, 2 years \$55.00, 1 year \$30.00

Payment Method: <input type="radio"/> Visa <input type="radio"/> Master Card
Name on Card: _____ Card #: _____
Expiration Date: _____ CVV (security code) on back: _____ Billing Zip Code: _____

I currently own the following motorcycle brands: (please select all that apply)

Honda Harley-Davidson Indian BMW Yamaha Suzuki Kawasaki Ducati Triumph

Can Am Moto Guzzi Other: _____

Where did you hear about us? (Example: magazine, website dealer, etc.): _____

New Member - Who referred you? Name _____ Member # _____

Date: _____

Signature: _____

Signature: _____

(Note: Only two signatures required for family membership)

<p>Make check payable in U.S. funds to: Eagle Wings Motorcycle Association and mail to: 6635 W. Happy Valley RD., Suite A104-443, Glendale, AZ 85310.</p> <p style="text-align: right;">Revision Date: Aug 1, 2022</p>

EWMA Membership Benefits and Services: 01/2024

The Eagle Book

EWMA Members have access to the EAGLE BOOK information on the EWMA Website! This is information that members have entered that gives other members information of what services that others are willing to offer in their area.

MTS (Motorcycle Towing Service)

EWMA Members will have access to the Premier Plan at discounted pricing (Almost half price!) PREMIER PLAN: MTS pays the first \$300 of the tow from point of pickup to point of delivery. All motorcycles must be registered with MTS. MTS will tow your motorcycle and your sidecar or trailer attached. They will send the right tow vehicle for what you need.

Vista Print corporate solutions

EWMA Members now have the ability to access CORPORATE pricing through our dedicated VistaPrint site. Members can select from pre-made templates for EWMA Marketing Materials, or create their own items to order. As an added Membership Benefit, orders that exceed \$50 receive FREE SHIPPING!

Hotel Engine

EWMA Members will have access to discounts at over 300 hotel chains around the world! As a member you can beat almost all of the other hotel search engines. You must be a EWMA member to get these discounts.

Wyndham Hotels

EWMA Members receive a 20% discount at any of the 24 Wyndham Brands. These include, Super 8, Days Inn, Ramada, LaQuinta, Howard Johnson, Travelodge, American, Wyndham, Baymont, Microtel, Wingate, and many others. You must be a EWMA member to get the corporate code.

Red Roof Inn

EWMA Members receive a 20% Discount at any Red Roof Inn through their Ride, Rest, and Repeat Program

Element3 Health

If your Medicare Advantage and Supplement plan includes the Element3 Health benefit, members can get their EWMA membership for FREE!

Hertz Rent A Car

Members can join Hertz Gold Plus Rewards for FREE and get a digital Rewards Card which tracks your points. Perks include:

- Skip the counter and go straight to your car
- Choose from a wide selection of cars
- Add an additional driver for FREE
- Drop the keys and go at return
- Earn Gold Plus Rewards towards FREE rental days

HSI-Health&Safety Institute

EWMA is an Approved Training Center for HSI© FA/CPR Training. Instructors are located across the US and classes are scheduled based on membership needs and instructor availability.

On The Fly

EWMA Members receive the Monthly Magazine Publication "On the Fly", which is automatically provided to the email address on each membership. This publication is used to bring pertinent, timely and interesting information to the membership.

EWMA Website

EWMA's website is growing Daily, and has many, many interactive features! Join EWMA to play and find out what it can do!

Safety

- Safety Presentations
- On-Bike Skills Practice
- Bike Games

These are designed to given by any member. There are different lengths of presentations for Rallies, Gatherings and Pre-Ride Safety talks. Several different topics.

Events

- Chapter Life (Socials and Rides)
- District Events & Rallies
- Region Events & Rallies

International Events

- Rendezvous
- Ride-Ins
- Cruise!

Recruitment Incentive

For each new member HOUSEHOLD you recruit you receive 1 free month of EWMA Membership, up to 6 months per year!

Officer Listing

Chapter Officers

Chapter Director, FL-1K

Ed & Jeanette Carr
386-846-0146
gwroadrider@gmail.com

Assistant Chapter Directors

Bob & Julie A'Hearn
301-536-0539
avcmawac@gmail.com

Membership Development / Fun Coordinator

Jeanette Carr
386-864-1678
gwroadrider@gmail.com

Chapter Treasurer / Newsletter Editor

Bob Coulson
(618) 791-5908
rcoulson23@icloud.com

Chapter Safety / Ride Coordinator

Bob Ingenito
rocknbob49@aol.com

Chapter Webmaster

Ed Carr III
ecarr.ewma.web@gmail.com

Sunshine Lady

Teresa Carr
386-562-0530
carrteresa10@yahoo.com

Chapter Medic First Aid Travel & Lodging Coordinator

Marcia Shad
marcia7780@gmail.com

Chapter "Goodie Store"

Gene & Eileen Heaney
386-441-9546
FinestWall@aol.com

EWMA International Team

CEO of EWMA

Anita Alkire
ewma.ceo@gmail.com
623-445-2380

COO of EWMA

Bruce Beeman
brucebeeman01@gmail.com
623-445-2380

President of EWMA

Bob & Nan Shrader
floridadd@msn.com

Vice President of Operations

Regions A, F, & G Don & Rhonda Weed
Regions B & E John & Yvette Moravec
Regions C & D Chris Toomer
Regions H, I & J Canada David Ward
& Giselle Collins
Regions K & L Overseas Alessandro
& Mariarosa Boveri

Vice President of Membership Benefits.

Bill & Cheryl Smith

Vice President of Membership Development.

Bruce & Tina Gebhard

Vice President of Finance

Randall & Janet Drake

Editor

Ann Hanna

Region A Directors

Jim & Sue Jackson

District Officers

Florida District Director

Fred & Karen Kennedy
850-232-0365
fredandkaren@cox.net

Assistant District Director

Geno & Kathie Jette
addgeno@yahoo.com

District Safety / Rider Coordinator

Dominick & Diane DeSiato
dominickflde@gmail.com

Assistant District Safety / Rider Coordinator

Ed and Jeanette Carr
386-846-0146
gwroadrider@gmail.com

Assistant District Safety / Rider Coordinator

John Cain
jcain16@gmail.com

District Treasurer

Pat Van Lengen
813-659-1343
treasurer@gwrraflorida.com

Important Websites:

National EWMA
www.ewma-world.org

Florida District
www.ewma-florida.org